



**Baumer**

Passion for Sensors

# My-Com. High-Precision Switch with 1 $\mu\text{m}$ Accuracy.

Reliable, ultra-precise. Edition 2013



«Micrometer Precision:  
70 times more accurate  
than a hair is thick»

# Visibly better: Baumer sensors.

The Baumer Group is leading at international level in the development and production of sensors, shaft encoders, measuring instruments as well as components for automatic image processing. As an owner-managed family business, we employ about 2500 workers worldwide in 36 subsidiaries and 18 countries. With marked customer orientation, consistently high quality and vast innovation potential worldwide, Baumer develops specific solutions for many industries and applications.

## Our standards – your benefits.

- Passion coupled with expertise – both have made us a sensor pioneer and technology leader
- Our range of services is hard to beat – we have the right product, developed by our own team, for every task
- Inspiring through innovation – a challenge Baumer employees take on every day
- Reliability, precision and quality – our customers' requirements are what drives us
- Partnership from the start – together with our customers we develop suitable solutions
- Always a step ahead – thanks to our production depth, our flexibility and our delivery reliability
- Available worldwide – Baumer is Baumer everywhere



# Unrivaled 1 $\mu\text{m}$ repeat accuracy.

Setting reference points, monitoring tolerances, controlling, adjusting. Fast, reliable, ultra-precise. Uncompromising accuracy tried and tested millions of times in industrial applications. Negligible activating forces. A compact precision switch in task matching packages. IP 67 versions for applications in contami-

nated areas. Repeat accuracy of 1 micrometer. For critical applications where spot-on precision is not enough. Baumer helps you make exactly the right choice.



Learn more.

Downloadable data sheets as well as further information about our products is available at:

[www.baumer.com/mycom](http://www.baumer.com/mycom)



# Contents.

---

## Introduction

Introduction	4
--------------	---

---

## My-Com precision switches

Overview	11
Type A	12
Type B	13
Type C	14
Type D	15
Type E	16/17
Type F	18
Type G	19
Type H	20
Type L	21
Type M	22/23

---

## Mounting guidelines

Mounting guidelines	24/25
---------------------	-------

---

## Accessories

Connectors	26
Pin assignment	27





## Baumer – setting standards with innovations.

The success story of the Baumer Group is characterized by innovations. By hardware and software engineers, designers or process engineers who work day in and day out to make our products and systems even better.

Our particular focus is on further miniaturization, enhanced precision as well as improved measuring speed and sensor robustness. That's what our products are characterized by - and something we are proud of.

The Baumer development teams are organized in an international network and are in close contact with well-known universities, recognized research institutes and highly specialized international engineering companies. As the technological leader, Baumer always endeavors to maintain its lead over the long term and protect its numerous innovations through patents.



## Our entire portfolio

- Absolute encoders
- Bearingless encoders
- Bearingless linear encoders
- Cable-pull encoders
- Capacitive sensors
- Conductivity measurement
- Counters
- Force/strain sensors
- Format alignment
- HeavyDuty encoders
- Inclusion sensors
- Incremental encoders
- Inductive sensors
- Industrial Cameras
- Level measurement
- Magnetic sensors
- Mechanical precision switches
- Photoelectric sensors
- Pressure measurement
- Process displays
- Temperature measurement
- Ultrasonic sensors
- Vision Sensors



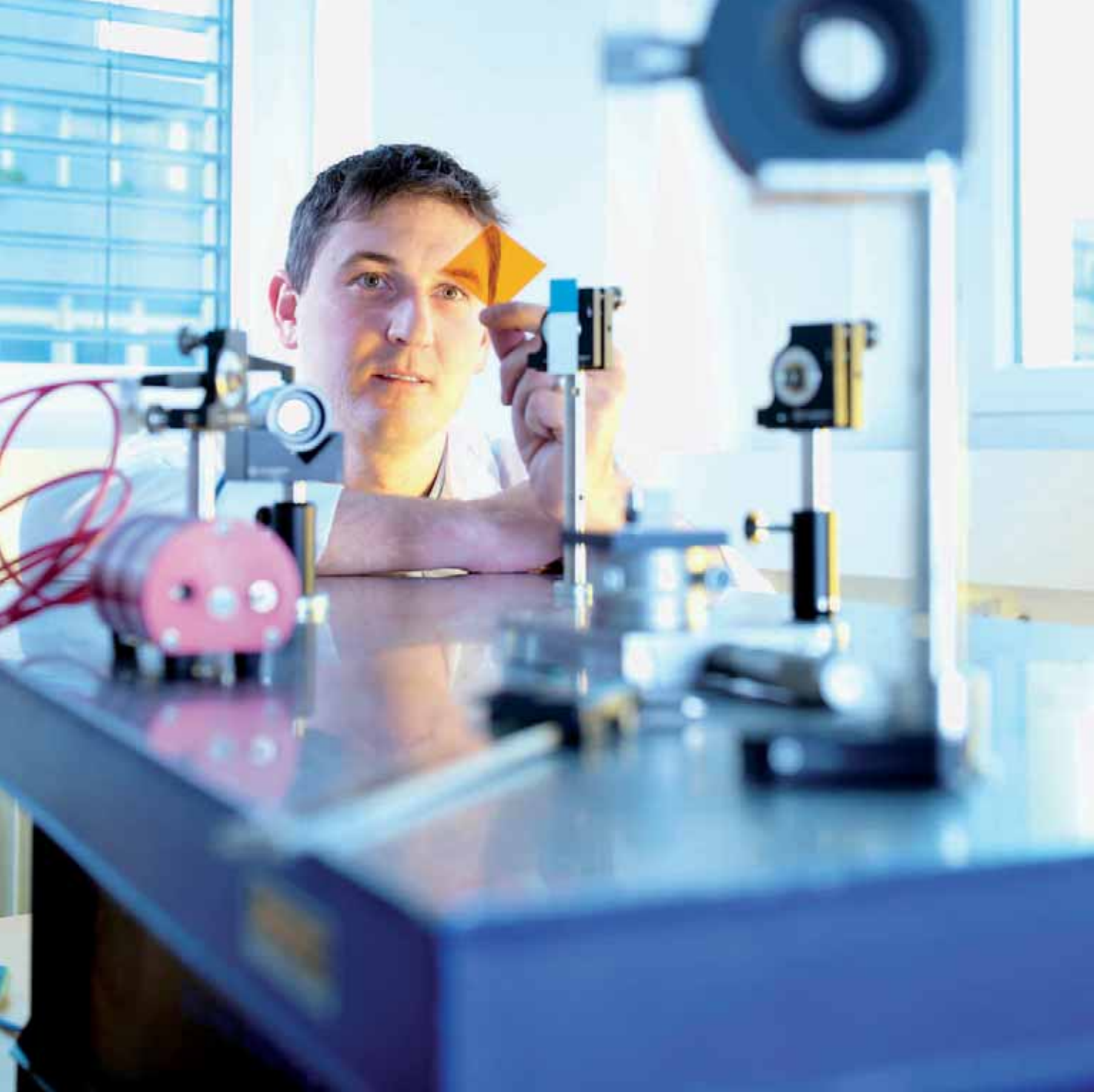


- Inductive sensors
- Capacitive sensors
- Photoelectric sensors
- Vision sensors
- Ultrasonic sensors
- Magnetic sensors
- Precision switches  
My-Com

## Passion for sensors.

Whether for object or position recognition, measuring, a miniaturized or exceptionally robust design – Baumer has the right sensor for every application. Different sensor functions in standard housings ease assembly for the user and limit the setup time to a minimum. Baumer can supply a wide range from inductive to vision sensors and advise you comprehensively.





## Customized solutions.

Our broad range of products enables us to provide the optimum solution for a large number of applications. But customers might have needs completely outside these application areas that cannot be entirely satisfied by the products currently on the market.

And this is precisely why our development engineers work closely with our customers. In searching for optimum solutions to meet these special needs, we are able to create customized solutions. Our customized solutions range from special mechanical designs to completely new sensor systems.

An innovative sensor solution can also help you gain a significant competitive advantage.

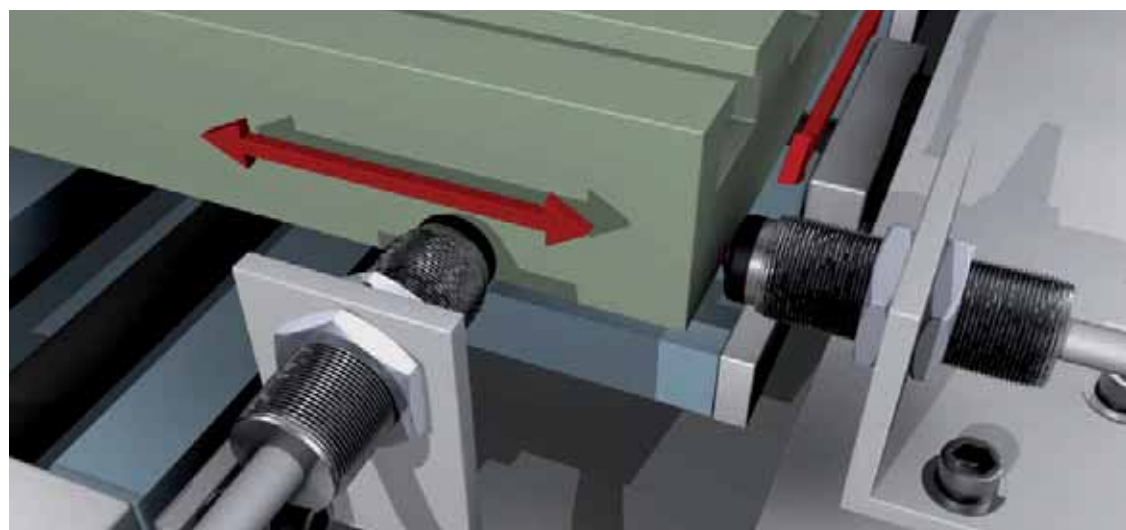
We would be happy to advise you!



# My-Com<sup>®</sup> ultra precision switches.



With a repeat accuracy of 1 micron, the *My-Com*<sup>®</sup> remains undisputedly the most accurate and most compact mechanical switch in the world. The standard *My-Com*<sup>®</sup> range of the most diverse mechanical and electric types largely reflects the requirements of the market. With its extremely compact design, the *My-Com*<sup>®</sup> can also be easily integrated in very constrained surroundings.



## Precision finishing

- Referencing XY-tables on machine tools



### 0,001 mm repeat accuracy

Ensured reliable repeat accuracy of one micrometer makes *My-Com*® the most precise limit switch in the world. The mechanical device – with a service life of 10 million switching operations – provides ultra-precise reference signals for most diverse applications



### 1 µm accuracy even in harsh environments

*My-Com*® precision switches retain their ultimate precision even under most adverse conditions.

Viton and silicone gaskets prevent the gold-plated contacts from impairment by dirt, dust and condensation and thus ensure constant micrometer switching precision throughout the entire service life.



### Housing fronts and product variants

*My-Com*® high-precision switches excel by ultra-compact design merged with big product variety.

- Conical and tapered housing fronts
- Activating force configurable from 30 cN to 250 cN according to application
- Spherical hard metal or ruby tips for lateral approach

- Integrated amplifier with LED for 50 mA load current (PLC)

Typical applications for the *My-Com*® high-precision switches are:

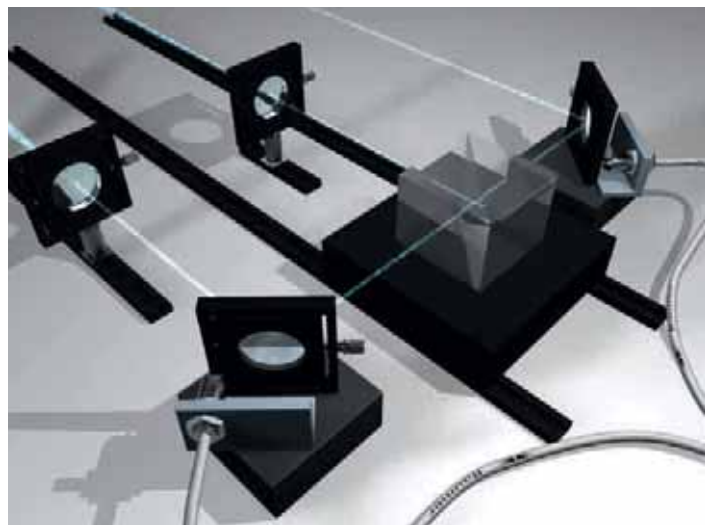
- Reference point setting in X/Y tables and machine tools
- Monitoring of the closing and locking accuracy of injection molding dies
- Detection of the smallest deflections, movements and deformations
- Integration in measuring sensors, gauges and activating pins
- Calibration of measuring instruments in quality control
- Monitoring of surface roughness
- Other applications in precision mechanical engineering

Rigorous attention was paid to the design of the *My-Com*® precision switch to reduce the number of components to an absolute minimum. Just three moving parts and high-quality materials guarantee a large number of switching operations with constant repeat accuracy. Short, linear displacements in just two directions and low activating forces further increase the reliability and service life of the *My-Com*® precision switch. The *My-Com*® has proven its impressive reliability in over 1 million applications.



### Quality control

- Concentricity check in measuring gauge
- Checking parts for correct thickness
- Monitoring concentricity



### Laboratory test setups

- Referencing mirrors and beam-splitters
- Home position sensor
- Precision referencing



## Mechanical data

Repeat accuracy (T = const)	< 0,001 mm (1 micron)
Mechanical lifetime	10'000'000 switchings
Switching frequency	0 - 10 Hz
Max. activating velocity	< 30 mm/s
Temperature range	-20 °C to +75 °C (-5 °F to +165 °F)
Standard cable material	PVC
Protection class (standard)	IP 50

## LED indicator

The My-Com types with transistor output are available with LED output indicators.

## Transistor output

The My-Com types L, G and M are available with a transistorized output. When supplied with this configuration, the output circuit is supplied normally open (NO). A protective diode is incorporated into the circuit to protect against transients.

## Activation force

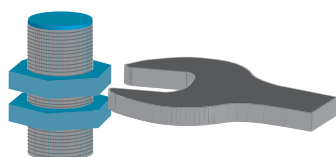
For most My-Coms, the appropriate activation force can be defined at the time of ordering.

## Increased environmental protection (IP 67)

For applications in harsh environments (dust, oil, cooling fluid) we recommend the waterproof My-Com D, H or M. The My-Com type L, with transistor output, is also available with the same protection (IP 67). The sealing membrane for all of these is made of Viton.

## Maximum installation torque (not lubricated)

If the published installation torque specifications prove to be insufficient for your application, we recommend using a nut locking liquid to secure the My-Com. The published specifications for maximum torque must not be exceeded!















My-Com D	20 Nm
My-Com E	5,5 Nm
All others	3,5 Nm

## Part number key

	MY-COM	F	50	/	80	
	MY-COM	L	75	N	80	/L
Type	_____		_____		_____	
Activating force in gram force (cN)	_____		_____		_____	
Transistor output	_____		_____		_____	
N = NPN or P = PNP						
Cable length in cm	_____		_____		_____	
LED	_____		_____		_____	



product family	MY-COM A	MY-COM B	MY-COM C	MY-COM D	MY-COM E	MY-COM E
						
housing material	brass nickel plated	brass nickel plated	brass nickel plated	browned brass	brass nickel plated	brass nickel plated
housing length	20 mm 30 mm	20 mm 30 mm	20 mm 30 mm	56 mm 66 mm	36 mm	47 mm
cable, 80 cm	■	■	■	■	■	■
connector M8	■		■	■		
connector S30		■				
NPN make function (NO)						■
PNP make function (NO)						■
break function (NC) mechanical	■	■	■	■	■	
protection class	IP 50	IP 50	IP 50	IP 67	IP 50	IP 50
<b>page</b>	<b>12</b>	<b>13</b>	<b>14</b>	<b>15</b>	<b>16</b>	<b>17</b>

product family	MY-COM F	MY-COM G	MY-COM H	MY-COM L	MY-COM M	MY-COM M
						
housing material	brass nickel plated	brass nickel plated	brass nickel plated	brass nickel plated	brass nickel plated	brass nickel plated
housing length	28 mm 38 mm	28 mm 38 mm	21 mm 40 mm	30 mm 40 mm	27 mm 37 mm	27 mm 37 mm
cable, 80 cm	■	■	■	■	■	■
connector M8	■	■	■	■	■	■
NPN make function (NO)		■		■		■
PNP make function (NO)		■		■		■
break function (NC) mechanical	■		■		■	
protection class	IP 50	IP 50	IP 67	IP 67	IP 67	IP 67
<b>page</b>	<b>18</b>	<b>19</b>	<b>20</b>	<b>21</b>	<b>22</b>	<b>23</b>



- conical housing front
- two wire break function (NC)



**general data**

repeat accuracy	< 0,001 mm
mech. pre-run / overrun	- / 1,5 mm approx.
measurement type	contact with medium
direction of approach	frontal

**electrical data**

DC voltage max.	15 VDC
switch. current DC max.	2 mA
AC voltage max.	24 VAC
switch. current AC max.	50 mA
output circuit	break function (NC) mechanical

**mechanical data**

activating pin	zirconium oxide ZrO <sub>2</sub>
housing material	brass nickel plated
dimension	8 mm
type	cylindrical threaded

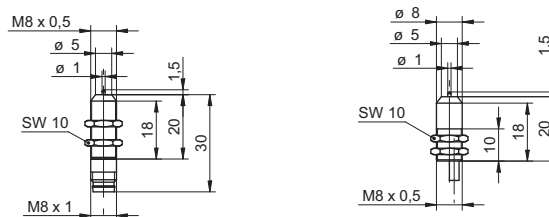
**ambient conditions**

operating temperature	-20 ... +75 °C
protection class	IP 50

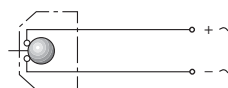
**connectors and mating connectors**

ESG 32SH0200	Connector M8, 3 pin, straight, 2 m
ESW 31SH0200	Connector M8, 3 pin, angular, 2 m
additional cable connectors: see accessories	

**dimension drawings**



**connection diagram**



**remarks**

other versions on request

order reference	activating force	connection types	housing length
MY-COM A30/80	30 cN	cable, 80 cm	20 mm
MY-COM A30/S35	30 cN	connector M8	30 mm
MY-COM A50/80	50 cN	cable, 80 cm	20 mm
MY-COM A50/S35	50 cN	connector M8	30 mm
MY-COM A75/80	75 cN	cable, 80 cm	20 mm
MY-COM A75/S35	75 cN	connector M8	30 mm
MY-COM A100/80	100 cN	cable, 80 cm	20 mm
MY-COM A100/S35	100 cN	connector M8	30 mm



- flat housing front
- two wire break function (NC)



**general data**

repeat accuracy	< 0,001 mm
mech. pre-run / overrun	- / 1,5 mm approx.
measurement type	contact with medium
direction of approach	frontal

**electrical data**

DC voltage max.	15 VDC
switch. current DC max.	2 mA
AC voltage max.	24 VAC
switch. current AC max.	50 mA
output circuit	break function (NC) mechanical

**mechanical data**

activating pin	zirconium oxide ZrO <sub>2</sub>
housing material	brass nickel plated
dimension	8 mm
type	cylindrical threaded

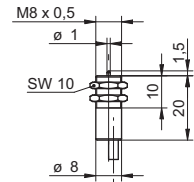
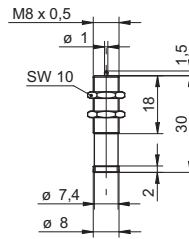
**ambient conditions**

operating temperature	-20 ... +75 °C
protection class	IP 50

**connectors and mating connectors**

KSW 30BV0200 “snap-in” connector, 2 pin, angular, 2 m  
 additional cable connectors: see accessories

**dimension drawings**



**connection diagram**



**remarks**

other versions on request

order reference	activating force	connection types	housing length
MY-COM B30/80	30 cN	cable, 80 cm	20 mm
MY-COM B50/80	50 cN	cable, 80 cm	20 mm
MY-COM B75/80	75 cN	cable, 80 cm	20 mm
MY-COM B100/80	100 cN	cable, 80 cm	20 mm
MY-COM BS30	30 cN	connector S30	30 mm
MY-COM BS50	50 cN	connector S30	30 mm
MY-COM BS75	75 cN	connector S30	30 mm
MY-COM BS100	100 cN	connector S30	30 mm



- rectangular brass housing
- two bore mounting
- two wire break function (NC)



### general data

repeat accuracy	< 0,001 mm
mech. pre-run / overrun	- / 1,5 mm approx.
measurement type	contact with medium
direction of approach	frontal

### electrical data

DC voltage max.	15 VDC
switch. current DC max.	2 mA
AC voltage max.	24 VAC
switch. current AC max.	50 mA
output circuit	break function (NC) mechanical

### mechanical data

activating pin	zirconium oxide ZrO <sub>2</sub>
housing material	brass nickel plated
dimension	8 mm
type	rectangular

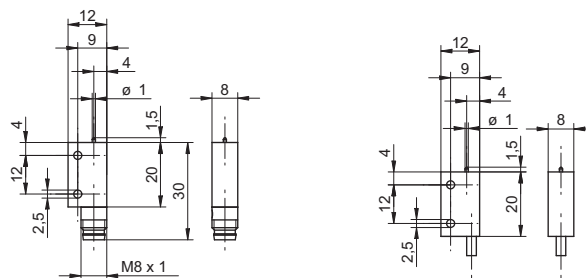
### ambient conditions

operating temperature	-20 ... +75 °C
protection class	IP 50

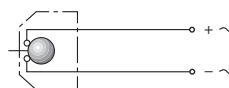
### connectors and mating connectors

ESG 32SH0200	Connector M8, 3 pin, straight, 2 m
ESW 31SH0200	Connector M8, 3 pin, angular, 2 m
additional cable connectors: see accessories	

### dimension drawings



### connection diagram



### remarks

other versions on request

order reference	activating force	connection types	housing length
MY-COM C30/80	30 cN	cable, 80 cm	20 mm
MY-COM C30/S35	30 cN	connector M8	30 mm
MY-COM C50/80	50 cN	cable, 80 cm	20 mm
MY-COM C50/S35	50 cN	connector M8	30 mm
MY-COM C75/80	75 cN	cable, 80 cm	20 mm
MY-COM C75/S35	75 cN	connector M8	30 mm
MY-COM C100/80	100 cN	cable, 80 cm	20 mm
MY-COM C100/S35	100 cN	connector M8	30 mm





- browned brass
- two wire break function (NC)
- protection class IP 67

**general data**

repeat accuracy	< 0,001 mm
activating force	250 cN
mech. pre-run / overrun	1 mm / 1 mm approx.
measurement type	contact with medium
direction of approach	frontal and lateral approach

**electrical data**

DC voltage max.	15 VDC
switch. current DC max.	2 mA
AC voltage max.	24 VAC
switch. current AC max.	50 mA
output circuit	break function (NC) mechanical

**mechanical data**

activating pin	hardened steel
housing material	browned brass
dimension	16 mm
type	cylindrical threaded

**ambient conditions**

operating temperature	-20 ... +75 °C
protection class	IP 67

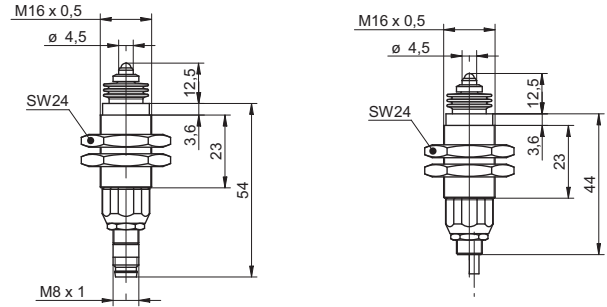
**connectors and mating connectors**

ESG 32SH0200	Connector M8, 3 pin, straight, 2 m
ESW 31SH0200	Connector M8, 3 pin, angular, 2 m
additional cable connectors: see accessories	

order reference	connection types	housing length
MY-COM D250/80	cable, 80 cm	56 mm
MY-COM D250/S35	connector M8	66 mm



**dimension drawings**



**connection diagram**



**remarks**

other versions on request



- spherical hard metal tip
- thread M6 x 0,5
- two wire break function (NC)



**general data**

repeat accuracy	< 0,001 mm
mech. pre-run / overrun	- / 0,8 ... 1,5 mm approx.
measurement type	contact with medium
direction of approach	frontal and lateral approach

**electrical data**

DC voltage max.	15 VDC
switch. current DC max.	2 mA
AC voltage max.	24 VAC
switch. current AC max.	50 mA
output circuit	break function (NC) mechanical

**mechanical data**

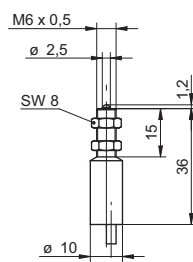
activating pin	hardened steel
housing material	brass nickel plated
dimension	6 mm
type	cylindrical threaded
housing length	36 mm
connection types	cable, 80 cm

**ambient conditions**

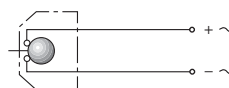
operating temperature	-20 ... +75 °C
protection class	IP 50

order reference	activating force
MY-COM E75/80	75 cN
MY-COM E100/80	100 cN

**dimension drawing**



**connection diagram**



**remarks**

other versions on request



- spherical hard metal tip
- thread M6 x 0,5
- three wire make function (NO)



**general data**

repeat accuracy	< 0,001 mm
activating force	75 cN
mech. pre-run / overrun	- / 0,8 ... 1,5 mm approx.
measurement type	contact with medium
direction of approach	frontal and lateral approach

**electrical data**

voltage supply range +Vs	5 ... 36 VDC
load current max. at 24 VDC	50 mA
load resistance min.	480 Ohm

**mechanical data**

activating pin	hardened steel
housing material	brass nickel plated
dimension	6 mm
type	cylindrical threaded
housing length	47 mm
connection types	cable, 80 cm

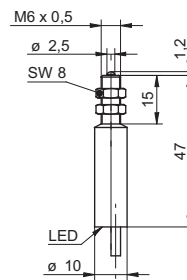
**ambient conditions**

operating temperature	-20 ... +75 °C
protection class	IP 50

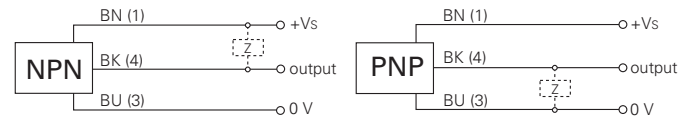
**order reference**

order reference	output circuit
MY-COM E75N80/L	NPN make function (NO)
MY-COM E75P80/L	PNP make function (NO)

**dimension drawing**



**connection diagrams**



**remarks**

other versions on request



- long body
- long thread length
- two wire break function (NC)



**general data**

repeat accuracy	< 0,001 mm
mech. pre-run / overrun	- / 1,5 mm approx.
measurement type	contact with medium
direction of approach	frontal

**electrical data**

DC voltage max.	15 VDC
switch. current DC max.	2 mA
AC voltage max.	24 VAC
switch. current AC max.	50 mA
output circuit	break function (NC) mechanical

**mechanical data**

activating pin	zirconium oxide ZrO <sub>2</sub>
housing material	brass nickel plated
dimension	8 mm
type	cylindrical threaded

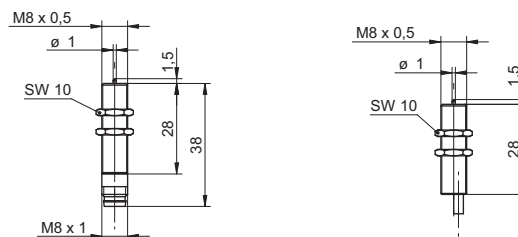
**ambient conditions**

operating temperature	-20 ... +75 °C
protection class	IP 50

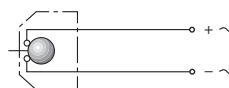
**connectors and mating connectors**

ESG 32SH0200	Connector M8, 3 pin, straight, 2 m
ESW 31SH0200	Connector M8, 3 pin, angular, 2 m
additional cable connectors: see accessories	

**dimension drawings**



**connection diagram**



**remarks**

other versions on request

order reference	activating force	connection types	housing length
MY-COM F30/80	30 cN	cable, 80 cm	28 mm
MY-COM F30/S35	30 cN	connector M8	38 mm
MY-COM F50/80	50 cN	cable, 80 cm	28 mm
MY-COM F50/S35	50 cN	connector M8	38 mm
MY-COM F75/80	75 cN	cable, 80 cm	28 mm
MY-COM F75/S35	75 cN	connector M8	38 mm
MY-COM F100/80	100 cN	cable, 80 cm	28 mm
MY-COM F100/S35	100 cN	connector M8	38 mm





- transistor output NPN / PNP
- long thread length
- three wire make function (NO)

**general data**

repeat accuracy	< 0,001 mm
activating force	75 cN
mech. pre-run / overrun	- / 1,5 mm approx.
measurement type	contact with medium
direction of approach	frontal

**electrical data**

voltage supply range +Vs	5 ... 36 VDC
load current max. at 24 VDC	50 mA
load resistance min.	480 Ohm

**mechanical data**

activating pin	zirconium oxide ZrO <sub>2</sub>
housing material	brass nickel plated
dimension	8 mm
type	cylindrical threaded

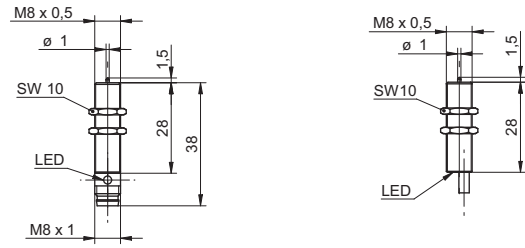
**ambient conditions**

operating temperature	-20 ... +75 °C
protection class	IP 50

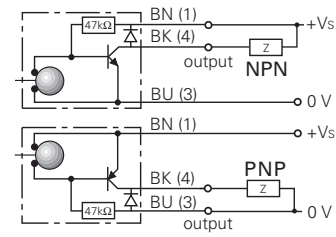
**connectors and mating connectors**

ESG 32SH0200	Connector M8, 3 pin, straight, 2 m
ESW 31SH0200	Connector M8, 3 pin, angular, 2 m
additional cable connectors: see accessories	

**dimension drawings**



**connection diagram**



**remarks**

other versions on request

order reference	output circuit	connection types	housing length
MY-COM G75N/S35L	NPN make function (NO)	connector M8	38 mm
MY-COM G75N80/L	NPN make function (NO)	cable, 80 cm	28 mm
MY-COM G75P/S35L	PNP make function (NO)	connector M8	38 mm
MY-COM G75P80/L	PNP make function (NO)	cable, 80 cm	28 mm



- spherical ruby tip
- two wire break function (NC)
- protection class IP 67

### general data

repeat accuracy	< 0,001 mm
activating force	75 cN
mech. pre-run / overrun	- / 0,6 mm approx.
measurement type	contact with medium
direction of approach	frontal

### electrical data

DC voltage max.	15 VDC
switch. current DC max.	2 mA
AC voltage max.	24 VAC
switch. current AC max.	50 mA
output circuit	break function (NC) mechanical

### mechanical data

activating pin	ruby
housing material	brass nickel plated
dimension	8 mm
type	cylindrical threaded

### ambient conditions

operating temperature	-20 ... +75 °C
protection class	IP 67

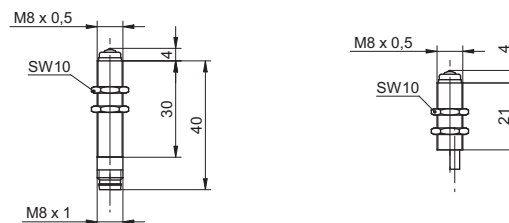
### connectors and mating connectors

ESG 32SH0200	Connector M8, 3 pin, straight, 2 m
ESW 31SH0200	Connector M8, 3 pin, angular, 2 m
additional cable connectors: see accessories	

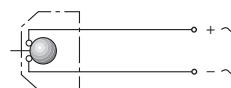
order reference	connection types	housing length
MY-COM H75/80	cable, 80 cm	21 mm
MY-COM H75/S35	connector M8	40 mm



### dimension drawings



### connection diagram



### remarks

gasket made of Viton 60° Shore A  
other versions on request



- transistor output NPN / PNP
- three wire make function (NO)
- protection class IP 67

### general data

repeat accuracy	< 0,001 mm
activating force	75 cN
mech. pre-run / overrun	- / 0,6 mm approx.
measurement type	contact with medium
direction of approach	frontal

### electrical data

voltage supply range +Vs	5 ... 36 VDC
load current max. at 24 VDC	50 mA
load resistance min.	480 Ohm

### mechanical data

activating pin	ruby
housing material	brass nickel plated
dimension	8 mm
type	cylindrical threaded

### ambient conditions

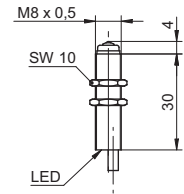
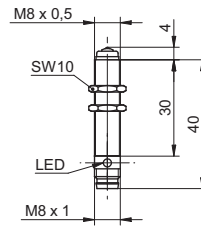
operating temperature	-20 ... +75 °C
protection class	IP 67

### connectors and mating connectors

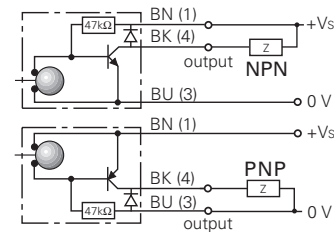
ESG 32SH0200	Connector M8, 3 pin, straight, 2 m
ESW 31SH0200	Connector M8, 3 pin, angular, 2 m
additional cable connectors: see accessories	



### dimension drawings



### connection diagram



### remarks

gasket made of Viton 60° Shore A  
other versions on request

order reference	output circuit	connection types	housing length
MY-COM L75N/S35L	NPN make function (NO)	connector M8	40 mm
MY-COM L75N80/L	NPN make function (NO)	cable, 80 cm	30 mm
MY-COM L75P/S35L	PNP make function (NO)	connector M8	40 mm
MY-COM L75P80/L	PNP make function (NO)	cable, 80 cm	30 mm



- silicone gasket
- protection class IP 67
- two wire break function (NC)

### general data

repeat accuracy	< 0,001 mm
activating force	75 cN
mech. pre-run / overrun	- / 1,5 mm approx.
measurement type	contact with medium
direction of approach	frontal

### electrical data

DC voltage max.	15 VDC
switch. current DC max.	2 mA
AC voltage max.	24 VAC
switch. current AC max.	50 mA
output circuit	break function (NC) mechanical

### mechanical data

activating pin	zirconium oxide $ZrO_2$
housing material	brass nickel plated
dimension	8 mm
type	cylindrical threaded

### ambient conditions

operating temperature	-20 ... +75 °C
protection class	IP 67

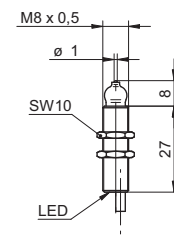
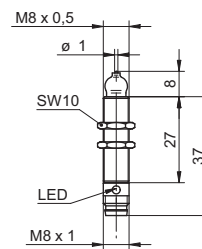
### connectors and mating connectors

ESG 32SH0200	Connector M8, 3 pin, straight, 2 m
ESW 31SH0200	Connector M8, 3 pin, angular, 2 m
additional cable connectors: see accessories	

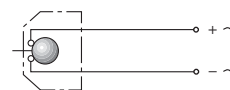
order reference	connection types	housing length
MY-COM M75/80	cable, 80 cm	27 mm
MY-COM M75/S35	connector M8	37 mm



### dimension drawings



### connection diagram



### remarks

gasket made of Silicone  
other versions on request



- silicone gasket
- protection class IP 67
- three wire make function (NO)



**general data**

repeat accuracy	< 0,001 mm
activating force	75 cN
mech. pre-run / overrun	- / 1,5 mm approx.
measurement type	contact with medium
direction of approach	frontal

**electrical data**

voltage supply range +Vs	5 ... 36 VDC
load current max. at 24 VDC	50 mA
load resistance min.	480 Ohm

**mechanical data**

activating pin	zirconium oxide ZrO <sub>2</sub>
housing material	brass nickel plated
dimension	8 mm
type	cylindrical threaded

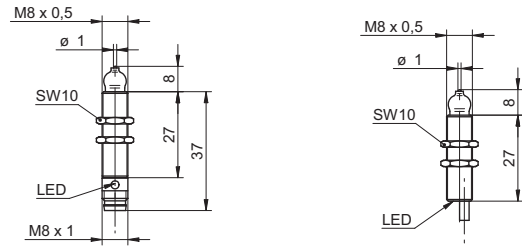
**ambient conditions**

operating temperature	-20 ... +75 °C
protection class	IP 67

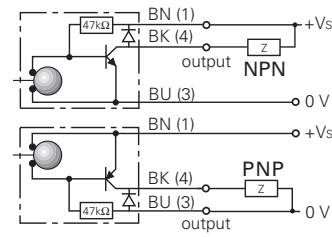
**connectors and mating connectors**

ESG 32SH0200	Connector M8, 3 pin, straight, 2 m
ESW 31SH0200	Connector M8, 3 pin, angular, 2 m
additional cable connectors: see accessories	

**dimension drawings**



**connection diagram**



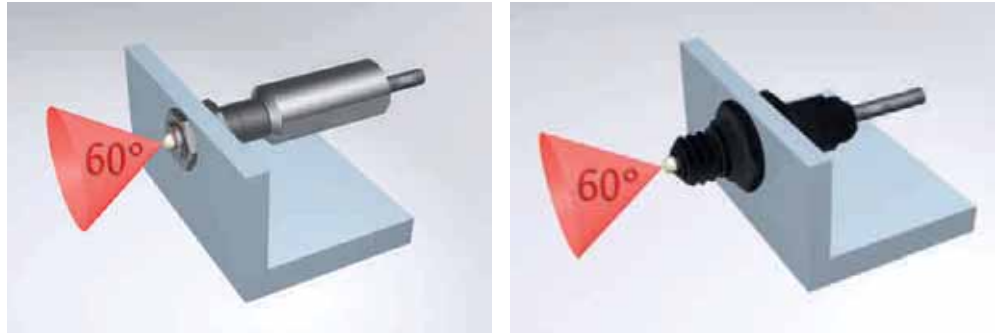
**remarks**

gasket made of Silicone  
other versions on request

order reference	output circuit	connection types	housing length
MY-COM M75N/S35	NPN make function (NO)	connector M8	37 mm
MY-COM M75N80	NPN make function (NO)	cable, 80 cm	27 mm
MY-COM M75P/S35	PNP make function (NO)	connector M8	37 mm
MY-COM M75P80	PNP make function (NO)	cable, 80 cm	27 mm

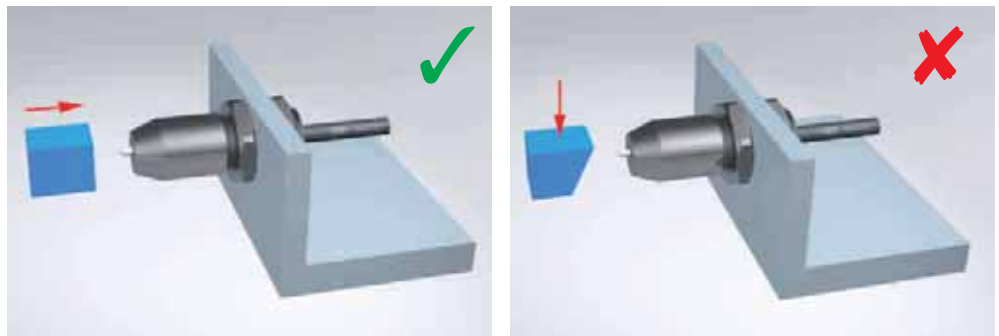


## with hardened steel stylus



My-Com E and D have spherical hardened steel tips which allow lateral approach of an object, such as a tapered plate.

## with ZrO<sub>2</sub> actuator tip



My-Com A, B, BS, C, F, G and M must be approached axially. Lateral approach will break the stylus.

## vibration-proof attachment



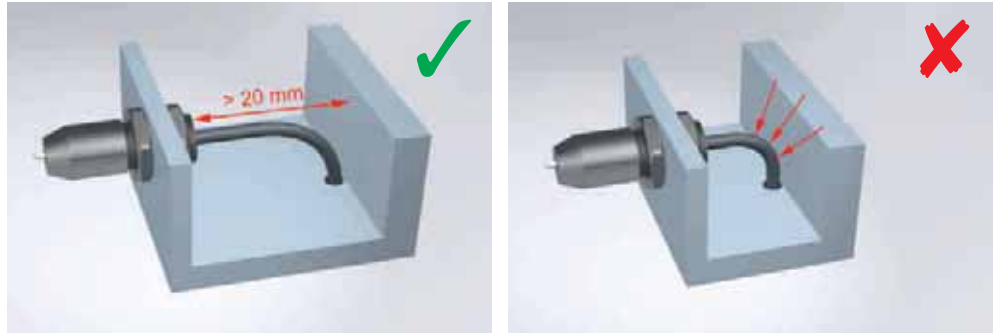
My-Com precision switch must be securely fixed into place. To ensure flawless operation, make sure the support is not subject to vibrations. Strong vibrations and high acceleration might entail switching errors caused by the inertia of the contact ball.



## Mounting guidelines

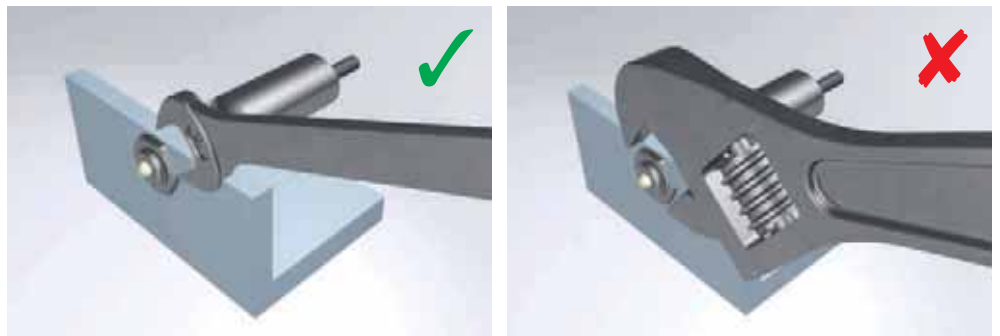


### cable considerations



To avoid cable breakage, the My-Com should be mounted with adequate clearance.

### installation



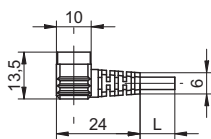
#### Maximum installation torque (not lubricated)

If the published installation torque specifications prove to be insufficient for your application, we recommend using a nut locking liquid to secure the My-Com.

The published specifications for maximum torque must not be exceeded!

My-Com D	20 Nm
My-Com E	5,5 Nm
All others	3,5 Nm

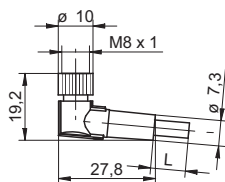
**KSW 30** - Connector Ø 9,5 mm angular, snap-in



order reference	
KSW 30BV0200	"snap-in" connector, 2 pin, angular, 2 m

- Connector unshielded "snap-in"
- 2 pin version
- Cable coating PVC

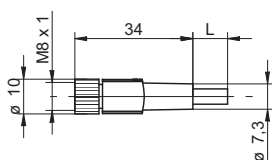
**ESW 31** - Connector M8 angular



order reference	
ESW 31SH0200	Connector M8, 3 pin, angular, 2 m
ESW 31SH0500	Connector M8, 3 pin, angular, 5 m
ESW 31SH1000	Connector M8, 3 pin, angular, 10 m

- Connector unshielded
- 3 pin versions
- Cable coating PUR
- Halogen-free
- Suitable for flexible cable carriers
- UL listed, number E315836

**ESG 32** - Connector M8 straight



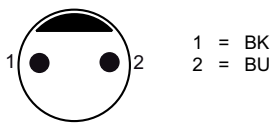
order reference	
ESG 32SH0200	Connector M8, 3 pin, straight, 2 m
ESG 32SH0500	Connector M8, 3 pin, straight, 5 m
ESG 32SH1000	Connector M8, 3 pin, straight, 10 m

- Connector unshielded
- 3 pin versions
- Cable coating PUR
- Halogen-free
- Suitable for flexible cable carriers
- UL listed, number E315836

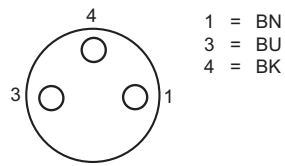
Connectors

Accessories

**Ø 9,5 2 pin**



**M8 3 pin**



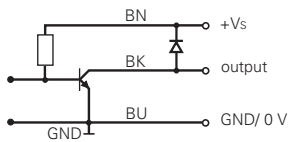
**KSW 30**

**ESG 32S  
ESW 31S**

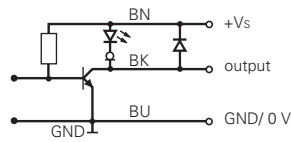
**Connection diagrams for My-Coms´ with 3 wires**

When supply voltage and load voltage are different, My-Com without LED should be used (open collector output).

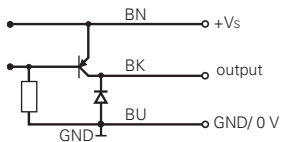
**NPN without LED**



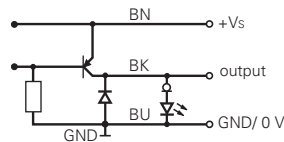
**NPN with LED**



**PNP without LED**

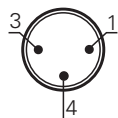


**PNP with LED**



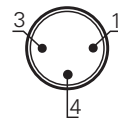
**Pin assignment S35 - view My-Com**

**3-wire make function with transistor output**



- 1 = BN (brown) +Vs
- 3 = BU (blue) 0 V
- 4 = BK (black) Output

**2-wire break function without transistor output**



- 1 = BN (brown) +Vs
- 3 = BU (blue) 0 V
- 4 = BK (black) n.c.



# Worldwide presence.

We strive to be close to our customers all around the world. We listen to them, and then after understanding their needs, we provide the best solution. Worldwide customer service for us starts with on-the-spot personal discussions and qualified consultation. Our application engineers speak your language and strive from the start, through an interactive problem analysis, to offer comprehensive and user-compatible solutions. The worldwide Baumer sales organizations guarantee a high level of readiness to deliver.



## Africa

Algeria  
Cameroon  
Côte d'Ivoire  
Egypt  
Morocco  
Reunion  
South Africa

## America

Brazil  
Canada  
Colombia  
Mexico  
United States  
Venezuela

## Asia

Bahrain  
China  
India  
Indonesia  
Israel  
Japan  
Kuwait  
Malaysia  
Oman  
Philippines  
Qatar  
Saudi Arabia  
Singapore  
South Korea  
Taiwan  
Thailand  
UAE

## Europe

Austria  
Belgium  
Bulgaria  
Croatia  
Czech Republic  
Denmark  
Finland  
France  
Germany  
Greece  
Hungary  
Italy  
Malta  
Martinique  
Netherlands  
Norway  
Poland  
Portugal  
Romania  
Russia  
Serbia  
Slovakia  
Slovenia  
Spain  
Sweden  
Switzerland  
Turkey  
United Kingdom

## Oceania

Australia  
New Zealand



For more information  
about our worldwide  
locations go to:  
[www.baumer.com/worldwide](http://www.baumer.com/worldwide)

# Our overall portfolio

Baumer provides for every application the perfect solution.

## Presence detection

- Inductive sensors
- Photoelectric sensors
- Ultrasonic sensors
- Capacitive sensors
- Magnetic sensors
- Mechanical precision switches

## Distance measurement

- Inductive sensors
- Photoelectric sensors
- Ultrasonic sensors
- Bearingless linear encoders
- Cable-pull encoders

## Rotary encoders / Angle measurement

- Absolute encoders
- Incremental encoders
- HeavyDuty encoders
- Bearingless encoders
- Format alignment
- Inclination sensors

## Identification / Image processing

- Industrial Cameras
- Vision Sensors

## Process instrumentation

- Level measurement
- Temperature measurement
- Pressure measurement
- Conductivity measurement
- Force/strain sensors
- Counters
- Process displays



**Baumer Group**  
International Sales  
P.O. Box · Hummelstrasse 17 · CH-8501 Frauenfeld  
Phone +41 52 728 1122 · Fax +41 52 728 1144  
sales@baumer.com · www.baumer.com

Represented by: